

TI X-Loader and FFX3.0 User Manual

General Description and Name

This BBM maintains the devices as 3 partitions and the first 2 individually use X-Loader BBM and the last one use the BBM FlashFX Pro 3.0.

[The device will fail if more bad blocks found within one partition than it allows(empty blocks).]

Relevant User Options

The following special features on the special features tab apply to this scheme. The default values might work in some cases but please make sure to set the right value according to your system.

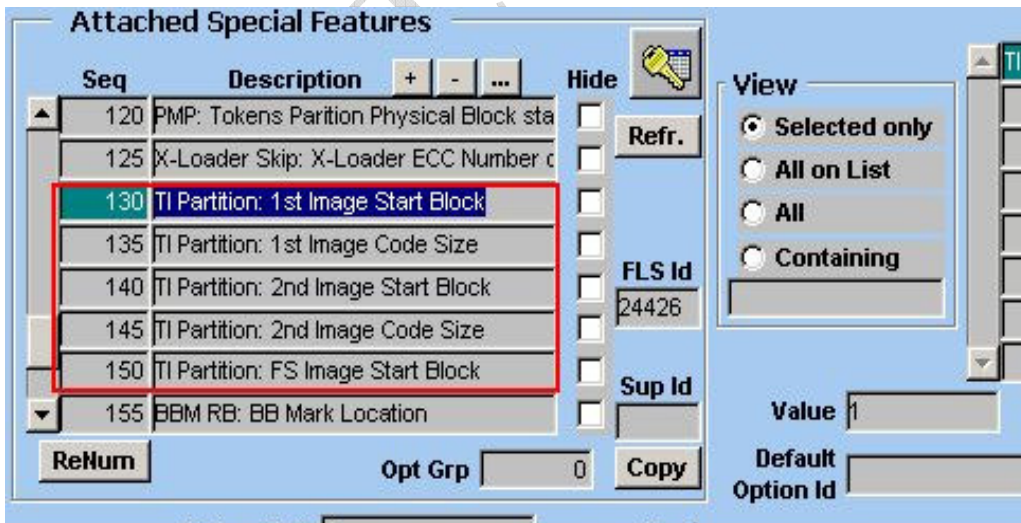
Please note only the below special feature items are related to this scheme and ignore any others. If any of below items doesn't exist, please check whether the right version has been installed or contact Data I/O for support by submitting Device Support Request through this address:

<http://www.dataio.com/support/dsr.asp>

Bad Block Handling Type = "TI X-Loader and FFX3.0"

Spare area : Please refer to "Description of common NAND special features.pdf". *Always set as "Enabled" for this BBM.*[Default 'Disabled']

Below items in Red Frame.



Please set as below:

... Start Block =
based.)

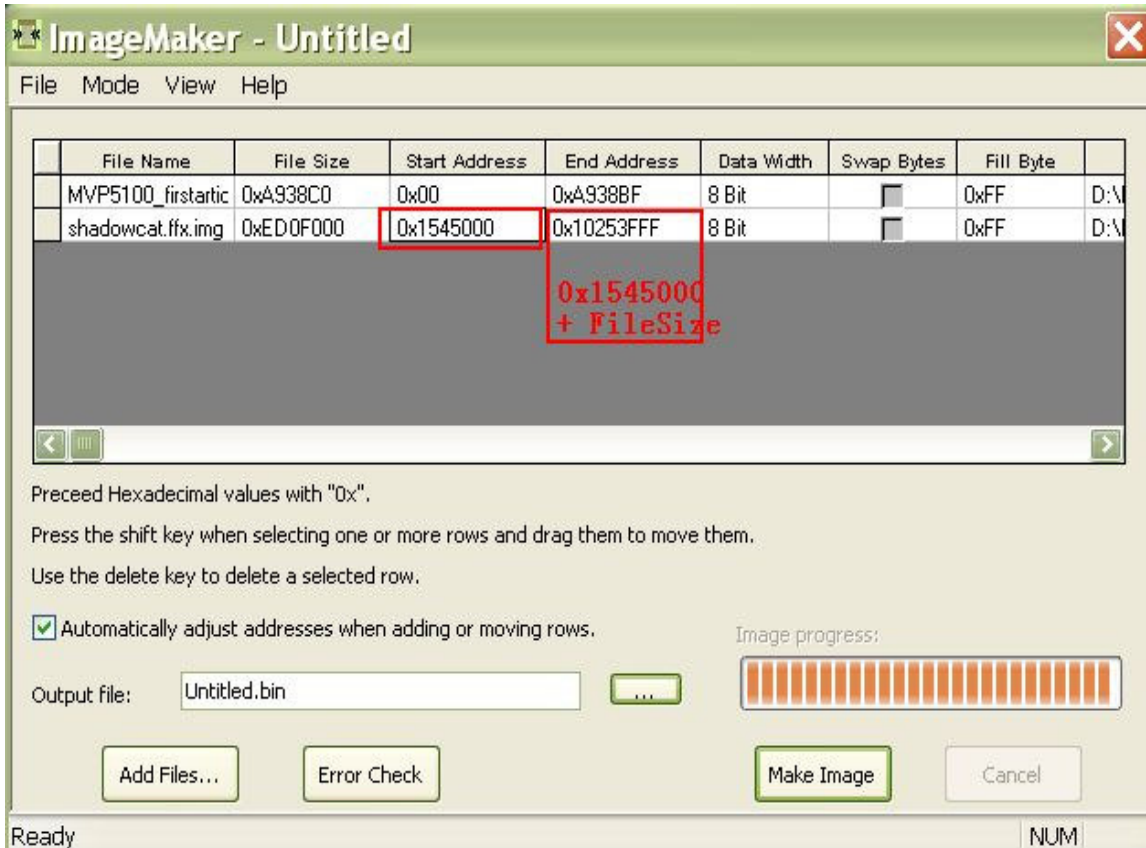
Which physical block this partitions begins.(0

... Code Size =
file for this partition.

How many blocks of contents included in the data

Special Notes

Customer needs to prepare the data within a single file with all the spare area data.
Maybe they will need the tool ImageMaker.exe as below.



Revision History

V1.0 June 11, 2009
Create this spec.

Appendix

You can get the file "Description of common NAND special features.pdf" from
<http://ftp.dataio.com/FCNotes/BBM/>